

Camperdown Theatre Company
Presents



GODSPELL

Book by John Michael Tebelak, Music & Lyrics by Stephan Schwartz.

Amateur production by special arrangement with Dominic Pty Ltd

Director: Rebecca Bradshaw

Music Director: Jane McSween

Cast: Cameron McAdam
Freya Leitch (Egberts)
Peter Gstrein
Jamie Rothman
Toby McKenzie
Laura Glennen
Monique Vagg
Sue Place
Pauline Van Dijk
Julie Canavan
Lucy Keough
Clare Dunn
Marlene Pearce
Jen Rowan
Julie Tune
Demi Holmes

Godspell

John-Michael Tebelak was 22 and studying for a master's degree at Carnegie Mellon University when he wrote and produced *Godspell* for his thesis after becoming fascinated with the gospels whilst attending Easter Vigil at St Paul's Cathedral in Pittsburgh. He enlisted his friend and fellow student *Stephen Schwartz* to write the music and *Godspell* was born.

First seen Off Broadway (a term given to theatres in New York that hold less than 500 audience members) in the Cherry Lane Theatre in 1971, *Godspell* has been played by many amateur and professional theatre companies, churches and schools since and has become a favourite for its fun energetic songs and modern (albeit 40 years old) expression of the gospels. In 1972, hit song *Day by Day* was released and reached #13 on the American billboard charts and in 1973 the full length film *Godspell* was released starring Victor Garber and David Haskell

Godspell is based on the biblical Gospel of Matthew, along with three extra parables from the Gospel of Luke – 'Gospel' being a story of 'Good News' and a parable a story about something pointing to something else, usually with a moral attached.

The show begins with historical philosophers, Socrates, Thomas Aquinas, Leonardo da Vinci, Edward Gibbon, Jean-Paul Sartre, Martin Luther, Friedrich Nietzsche, and Buckminster Fuller espousing their philosophies to any who would listen eventually creating a babble that only Jesus can cut through. After a solemn entrance and a fiery baptism the fledgling community begins their journey learning about unjust judges and humbled Pharisees.

As Jesus (Cameron McAdam) guides this group of people to faith using his parables, this rag tag group of non-believers become enthralled by his teachings and stories and eventually grow to a tight knit group who are firmly in his camp.

After a rousing game of charades and a movie the community move on to the story of Lazarus and then just wait until you hear how bad a day the cast have had!! As the Prodigal son returns home, there is a cry for some wine!

In the second act, the mood shifts. The Mary Magdalene character Sonia (Freya Leitch [Egberts]) begs the community to return to God but they are already questioning Jesus. The smug Pharisees try their very best to unsettle and trick Jesus but he angrily rebukes their ways. Sonia is cast out as an adulteress, but Jesus does not condemn her, rather calls her to new life and she responds by remaining faithful and seeking to go with him. That however, is not possible, as Judas (Peter Gstrein) takes his 30 pieces of silver, betrays Jesus and leads him to the cross. In the powerful and emotional finale Jesus is crucified. It is the end – or is it?



Rebecca Bradshaw – Director



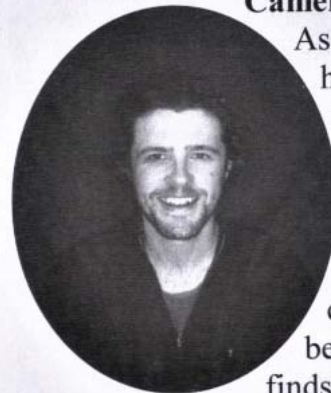
Rebecca first hit the stage at about age 7 and has been in nearly every role in theatre including on stage lead/chorus, orchestra, backstage, lighting, front of house through the Horsham Arts Council and Horsham College. CTC is proud that this is Rebecca's Directorial debut. She has been a supportive and encouraging director and Rebecca has loved watching the cast blossom and fill their parts. Rebecca says, "Seeing my vision of Godspell come to life is an amazing feeling." Rebecca enjoys the energy and fun of 'We beseech thee'. Rebecca is loving being a mum to Jessica.

Jane McSween – Musical Director



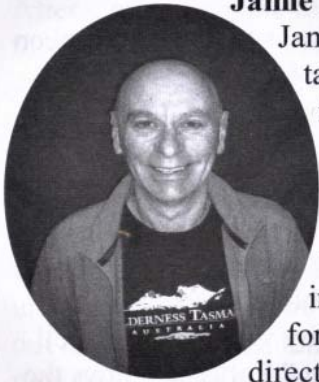
Jane comes to CTC with a wealth of musical and musical theatre experience, playing and performing in shows like 'Jesus Christ Superstar,' 'Westside Story' and 'Hind's Feet'. As Musical Director Jane has enjoyed working with the entire cast and watching people gain confidence, noting the looks on faces when they realise they can do it. She particularly likes the rhythm of 'Light of the world'. Jane is a medical scientist and enjoys hanging with her family, playing trombone with the Lakes and Craters band, kayaking, gardening and on rare occasions a good nights sleep!

Cameron McAdam – Jesus



As the local Uniting Church Minister, Cameron says his own life has been transformed by this story and he is delighted to have been cast as Jesus. Cameron has experience in theatre through the church and this is Cameron's third production with CTC and his first musical. He has a few favourite songs in the show, 'Save the people' because it sets the agenda for the show, 'All for the best' is just great fun to perform and the 'Finale' he finds very moving. Cameron is a golfer, a keen cook, enjoys the veggie garden and time with the family.

Jamie Rothman – John the Baptist / Chorus



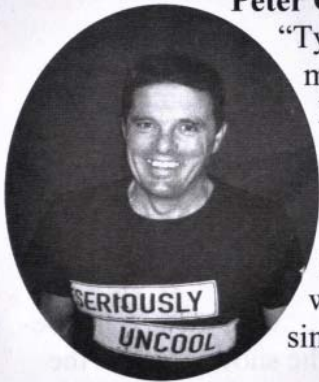
Jamie, who is a Carer in disability work in Colac is taken by his role as John the Baptist because “John is not afraid to tell it like it is. John is passionate about what he believes.” Jamie brings that passion to his performance as he terrorises the cast through John’s fiery preaching. He likes ‘Save the People’ because it is a cry for God to intervene, to protect and bring justice. Jamie performed in CTC’s production of Annie and has directed a one act play. Jamie enjoys bush walking and nature.

Freya Leitch (Egberts) – Sonia (Mary Magdalene)



Freya’s experience in, and passion for musical theatre is longstanding. Freya has been involved as a performer and choreographer in Geelong and Melbourne. – indeed she was nominated best choreographer in the 2005 Victorian Guild Awards for Geelong Lyric Theatre Society’s production of ‘Fiddler on the Roof’. This is Freya’s first performance with CTC after recently moving to Camperdown. Freya is enjoying the challenge of her part and cannot choose a favourite song; she enjoys all the music and lyrics throughout the show.

Peter Gstrein – Judas / David



“Type cast!” again says Peter. Peter is a returning member of CTC after being in many productions. He says that he is “Old enough to know better, young enough to do it again!” He enjoys the variety in his role as Judas and enjoys the fun of singing ‘All for the best’. Peter works as a Road Safety Officer for VicRoads, and enjoys cycling, water and snow skiing – although not simultaneously, and almost any music.

Laura Glennen – Chorus



In her debut performance with CTC, Laura, who has a love of singing, dancing and writing songs and stories, sings the musical hit from Godspell ‘Day by day’. She has enjoyed being in the chorus, with a little less pressure than a lead role. Laura has performed in ‘Oliver’ with St Thomas’ Primary School. Laura loves the lyrics of ‘Light of the world’. She is a student at Mercy Regional College.

Lucy Keough – Chorus



After a past performance with CTC in ‘Wonder in Aliceland’ in 2007, and after a lifetime of dance experience, including Jammin Danceworks and Camperdown School of Dance, and singing with Dennis Walter Youth Choir, we welcome Lucy to the chorus of Godspell. After finishing year 12 in 2010, Lucy is having a gap year from study and you might see her in Laff’s in Camperdown. She enjoys ‘Bless the Lord’ and likes the Broadway style of ‘Turn back O man’.

Sue Place – Chorus



Sue is well known at CTC both on stage and in the background being a member of the CTC committee. She has performed in ‘Barney’s Fair’, ‘Opportunity Knocks’ and ‘Trial by jury’. Sue is one of the friendly faces in reception at the Robinson Street Medical Clinic. She is pleased that as a member of the chorus there are “not too many lines to remember,” and is a fan of ‘All good gifts’.

Monique Vagg – Chorus



After performing in school productions, 'Scary Nights' and 'Kid's in paradise,' Monique has been bitten by the performance bug and debuts with CTC in Godspell. She is delighted to have received a good number of lines and is having lots of fun. Monique is keen on 'Light of the world' for its energy and for the way the cast get into it. She is a student at Camperdown College and enjoys music, netball, dancing, basketball and swimming.

Pauline Van Dijk – Chorus



Pauline is a very relaxed, confident and skilful actor after performing in countless productions in many theatre companies across the region including CTC. She has enjoyed the opportunity to bounce different characters about the stage and interacting with the rich variety of cast members. She says, "Godspell keeps you involved the whole time, it is exhausting but great fun!" She believes 'We beseech thee' challenges the concentration and is an over the top interpretation of the gospel. Pauline is a Library Assistant at Camperdown College, enjoys needlework, reading, writing poetry and has a new passion for water aerobics.

Demi Holmes – Chorus



This is Demi's second production with CTC after a role in 'Wonder in Aliceland' in 2007. She also performed in Camperdown College's production of 'Scary Nights' in 2008. Demi is a *lively* member of the Godspell cast and has enjoyed playing a variety of characters in the show. Her favourite song in Godspell is 'Day by day'. Demi is a student at Camperdown College, swims and writes her own songs.

Marlene Pearce – Chorus



Marlene (or Lenny as she is also known) has performed in and directed a number of university productions. She enjoys the clowning around in Godspell and plays a number of quirky parts, a baby, an old man, 2 sons and a singing child. Marlene's Godspell song of choice is 'Save the people' because she likes watching Cameron try for the high notes! Marlene is a doctor at the Robinson Street Medical Clinic and in her spare time cooks, gardens, travels and enjoys art.

Julie Tune – Chorus



Julie is a returning member of CTC performing in previous productions 'Annie' and 'Barney's Fair'. Julie has a number of different parts in Godspell, a rich man one minute and story telling child or a fearful servant the next. Julie enjoys the strength of 'We beseech thee'. Julie works as a Personal Carer in Aged Care at Sunnyside House and her other interests include her 2 children, her garden and travel.

Jennifer Rowan – Chorus



Jen loves drama and music and combines her passions in this production. Jen studies drama at school and in 2008 took a lead role in St Patrick's School play. Jen likes 'Light of the world' because it's such a fun song to perform and rehearse – it gets everyone up and dancing. Jen is a student at Mercy Regional College, she enjoys netball and you might bump into her in Camperdown's 'Loaf & Lounge'.

Julie Canavan – Chorus



Julie challenges the audience to guess her age – it is a closely guarded secret. A past member of CTC performing in Barney's Fair and Ned Kelly we welcome Julie back for Godspell. Julie has returned with enthusiasm joining the CTC committee in the role of Treasurer. Julie loves the variety of the chorus role and finds the song, 'By my side' very moving, bringing a tear to her eye every time she hears it. Julie is the Human Resource Officer at Corangamite Shire, plays golf, cycles and does fitness training.

Toby McKenzie – Chorus



This is Toby's first performance with CTC, but not his first time on stage with experience through Jammin Danceworks and the Camperdown School of Dance. Toby enjoys singing and in Godspell sings the very beautiful 'All Good Gifts'. He finds this song optimistic and uplifting. Toby has found his time in Godspell fun with plenty of singing. Toby is a student at Mercy Regional College and around town you might see his face at Laff's. He likes architecture and art, especially singing.

Clare Dunn – Chorus / Ballet Dancer



Clare has vast theatre and dance experience ranging from productions with Mortlake College to Holiday Actors in Warrnambool. Clare has 20 years dance experience and choreographed a Holiday Actors production of 'Jesus Christ Superstar'. She says that the 'Finale' brings her to tears and that "Light of the world" is full of energy, bright and exiting. Clare works in Community Relations and Communications with the Corangamite Shire, loves reading, dancing and looking after her netball girls at the Power.

Production Crew

Production Manager Lyn McLean

Band

<i>Keyboard</i>	Jane McSween
<i>Percussion</i>	Gary Alexander
<i>Keyboard</i>	Judy McKenzie
<i>Guitar</i>	Tina Epworth
<i>Flute</i>	Samantha Alexander

Choreography Kate Meade
Sarah Drake
Bonnie Hinkley

Crew

<i>Lighting</i>	Tony Dupleix Thomas Brian
<i>Sound</i>	Tim O'Sullivan
<i>Costumes / Makeup</i>	Judy Webber
<i>Artwork</i>	Michelle Schutte
<i>Sign Writing</i>	Ray Watson
<i>Set Painting</i>	Alan Thomson John Cook
<i>Backstage</i>	John Chapman Wayne Blackney Allie Blackney Geoff McLean

Front of House Gail Watson
Hazel Pike
Lois Dupleix
Ann Rothman
Gillian Senior

Sponsors

The Camperdown Theatre Company appreciates the generous support of our sponsors.

Star Printing

Laff's

Camperdown Uniting Church

Hampden Hotel

Joker's Costume Hire

Future Freight

Camperdown Newsagency

Commercial Hotel

Amcal Chemist

Full Bloom

Mitre 10

Imagination Station